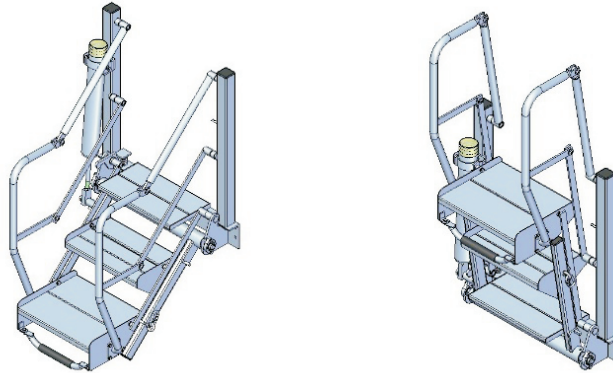


Folding Stairs

Wiese Europe's folding stairs have a solid weight design and are built according the highest safety regulations.

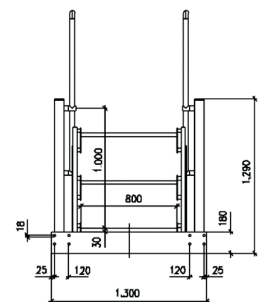
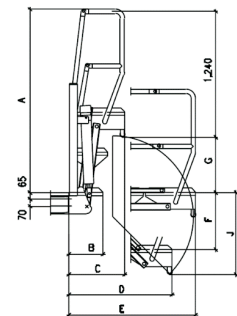


Features:

- Covering large height variation
- Carbon steel hot dip galvanized or chemical resistant anti-slip steps
- Hand + knee railing
- Automatic locking pedal in stowed position
- Balancing by spring cylinders
- 3-4-5-6 steps
- Width : 600/800/1.000/3.000 mm, other sizes upon request
- Hinged step for safety

Options:

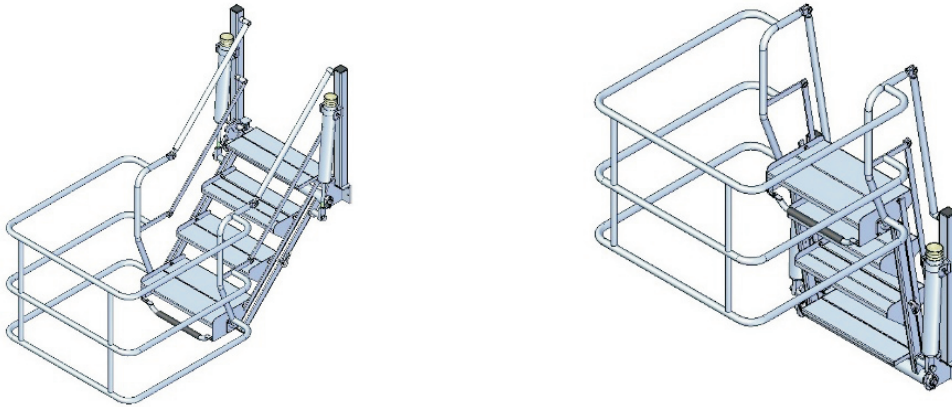
- Pneumatic operation
- Limit switch in normal or ex-proof design
- Chain locking device
- Protective cage which surrounds door opening



| | | A | B | C | D | E | F | G | J | Live load | Load on platform | |
|------|-------|----------|-----|-----|----------|------|----------|------|------|-----------|--------------------|-------------------|
| Type | Steps | mm | mm | mm | mm | mm | mm | mm | mm | Kg | V = vertical Kg | M = moment Kgm |
| 3T | 3 | 182 0 | 335 | 553 | 100 0 | 1250 | 550 | 560 | 800 | 197 | 540 | 260 |
| 4T | 4 | 222 0 | 335 | 602 | 130 0 | 1650 | 850 | 960 | 1100 | 215 | 680 | 441 |
| 5T | 5 | 262 0 | 335 | 650 | 160 0 | 2050 | 115 0 | 1360 | 1400 | 253 | 820 | 674 |

Fixed Safety Cages

Wiese Europe's folding stairs have a solid weight design and are built according the highest safety regulations. These folding stairs can be combined with a safety cage protecting the operators during their actions.



Features:

- Attached to the folding stairs
- Carbon steel hot dip galvanized or aluminum
- Hand + knee railing
- Balancing by spring cylinders attached to the folding stairs
- Available for 3-4-5-6 steps folding stairs

Options:

- Pneumatic operation
- Limit switch in normal or ex-proof design
- Side openings for loading arms with long dip tube

Standard sizes of the fixed safety cages are:

- 1,4 x 1,4 m
- 1,4 x 2,8 m
- Other sizes available on request

