



THE MASTER OF THE RUBBER EXPANSION JOINT



Company Profile

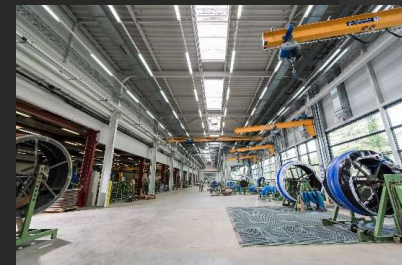
Christoph Adam

Dipl.-Ing. (TH)

ditec Dichtungstechnik GmbH

An der Staustufe 6
97318 Kitzingen / Germany

www.ditec-adam.de



Founding year:
Production plant:

1973
total land 17.855 m²
office, facilities 525 m²
roofed production 4.750 m²

roofed storage 2.000 m²
open storage 1.200 m²



Ownership structure:

51% Adam; 24,5% Wild; 24,5 Tripp

Management team:

Gabriele Adam – Accounting / Purchasing / Human Resources

Christoph Adam – Sales / Production

Technical / Sales team:

9 graduated engineers / technicians

Field installation team:

6 mechanics

Number of employed:

approx. 85

Turnover:

10 Mio Euro 2013

9,5 Mio Euro 2014

9,5 Mio Euro 2015



Main product:

Design:

Maximum size:

Pressure range:

Temperature:

Movements:

Rubber grade:

Steel parts:

Rubber Expansion Joints

individual on basis of PED 97/23/EC

round: up to Ø 5 meter

rectangular: up to 4 x 7 meter (one-piece vulcanized)

larger dimensions on request

standard: -1 bar to 40 bar

-40 °C to +200 °C

axial, lateral and angular

- customized arch style (single, multiple)

EPDM, IIR, NBR, CSM, CR, FPM, NR, Q

- drinking water approvals

- food grade qualities

- certified silicone grade for nuclear applications

Backing flanges, support rings, flow liner, UV-cover



Company certificates:

- DIN EN ISO 9001:2015
- DIN EN ISO 3834-3
- OHSAS 18001
- KTA 1401
- IAEA-50-CQ & FRA/N/100/OL3
- § 19 I WHG

- Quality management system since 1998
- Standard welding quality requirements since 2015
- Safety and health certification since 2008
- Approved Nuclear Power Plant supplier since 2000
- AREVA approved supplier for Olkiluoto 3 (FIN)
- German federal water act since 2001

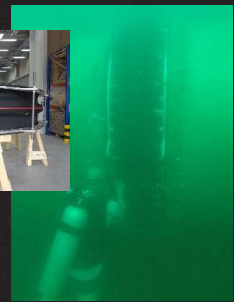
Product certifications:

- PED 97/23/EC Modul B + C1
- AD2000 HP 0
- EN1090-2 EX2
- WPQR
- GOST R &
- TR TS 010-2011 & 030-2013

- Pressure Equipment Directive since 2003
- Pressure Equipment Directive since 2015
- Structural components and kits for steel structures since 2015
- Welding procedure qualifications reports since 2015
- Export certifications for ditec products to Russia since 2009

YOUR PROJECT WITH ditec –
A FEW CASE STUDIES

World-wide sales representatives and partners
Export: ~ 50%
Clients: Siemens
Alstom
SNC
EDF
Fluor
Worley
etc.





Production equipment:

Calender equipment
 Autoclave
 Workstation
 Rolling mill
 Rubber press
 Extruder
 Hall cranes

Carpentry

Metal workshop

semi-finished product fabrication
 3 vulcanization facility up to Ø 5 meter and 7 m length
 30 expansion joint moulding stations
 compound mixing
 2 electrical heated rubber press
 rubber extrusion
 11 cranes with lifting capacities up to 5 tons

with CNC-machine, band-, circular-, panel- and chop-saw, press, milling machine

with 10 welding machines, plasma cutting machine, 4 rolling machines, plate shear, hole punch and 3 drilling machines, lathe, milling machine, sheet metal bender